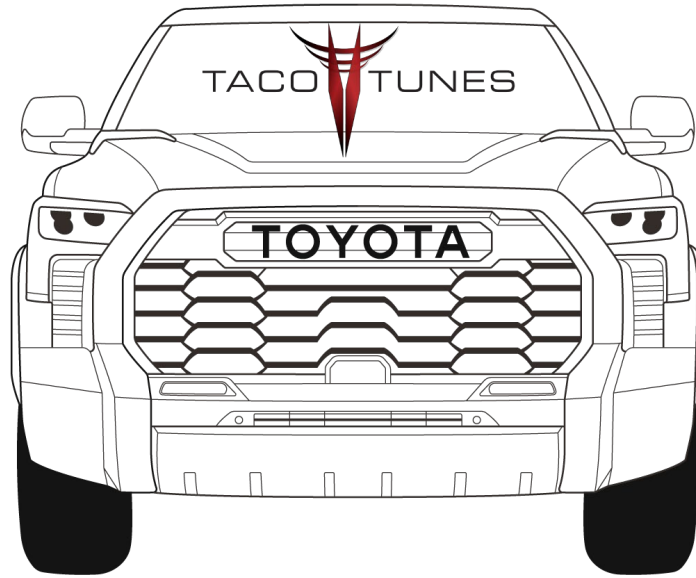
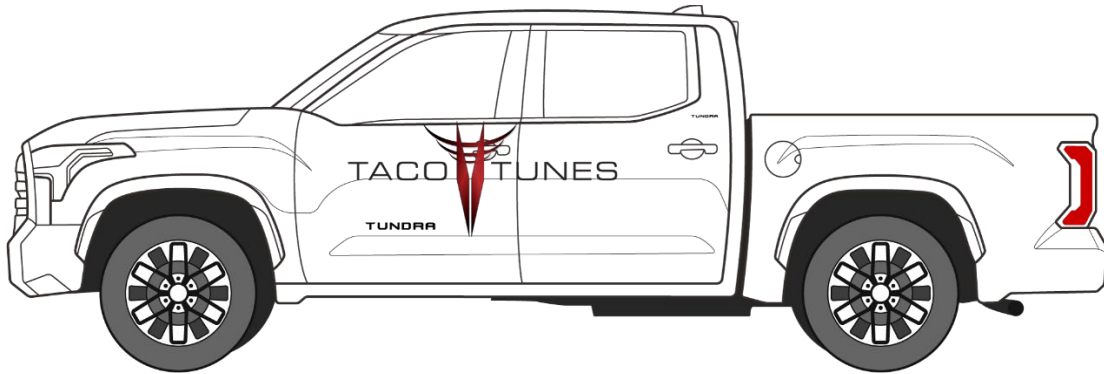


# 2022+ Toyota Tundra



## System 1A - Audio Installation Guide

Base Audio System  
(Non JBL Equipped Tundras)

[tacotunes.com](http://tacotunes.com)

Dated Created: 12/28/2021

Date Modified: 7/23/2024



# Preparation Day:

We highly suggest that you prep your installation a day ahead of time. This will ensure you are familiar with all the parts and allow you to familiarize yourself with the installation process. If you take your time and install the system properly you will enjoy years of unmatched sound quality and trouble-free performance.

Estimated Installation Time: Novice installer 6 -10 hours (including 2 hours prep time). 2<sup>nd</sup> time audio system installer 5 – 7 hours (including 2 hours prep time)

**IMPORTANT:** Many audio shops will try to cut every corner possible. If you are planning to have a shop install your System 1B, be sure they are going to follow the installation steps. Unfortunately, MOST audio shops are not familiar with our kits that are designed specifically for your Tundra and tend to deviate from the install guide; often resulting in cut wires and skipping important steps.

**DO NOT LET AUDIO SHOPS CUT UP YOUR WIRING.** Make sure they use all the parts included in your kit.

## **Amp Rack, Amp and Fuse Block Assembly:**

1. [Assemble your amp rack. \(Under Driver Side Install\)](#)
2. [Assemble your amp rack – Rear wall watch above video and see diagram below:](#)
3. [Mount amps and distribution block to your amp rack.](#)
4. [Attach Ground & Power Wires to your Amp](#)

**IMPORTANT: IF YOUR TRUCK HAS POWER SEATS YOU WILL MOUNT YOUR AMPS ON REAR WALL. IF YOUR TRUCK DOES NOT HAVE POWER SEATS, MOUNT YOUR AMPS UNDER DRIVER SEAT.**

## **Front Door Component Speaker Preparation / Dash Tweeters Assembly:**

1. [Insert your tweeters into dash tweeter adapters and install tweeter brackets to hold in place.](#)
2. [Mount your front door mid bass drivers into your speaker mounts.](#)
3. Do not install your speaker or crossover terminals at this time.

## **Rear Door Component Speaker Assembly:**

1. [Mount your mid bass drivers into your speaker mounts.](#)
2. [Attach your crossovers to your crossover plates.](#)
3. Save tweeters for installation day.
4. Do not install your speaker or crossover terminals.

## **Subwoofer box preparation:**

1. [Wire your subwoofer terminal cup and install into your subwoofer box.](#)
2. [Wire your subwoofers for the correct resistance / load.](#)
3. [Install your subwoofer\(s\) into the subwoofer box.](#)

## **Download Tuning (test) Tones:**

1. Download 50Hz, 80Hz and 1Khz tones to your phone.

Preview the installation videos:

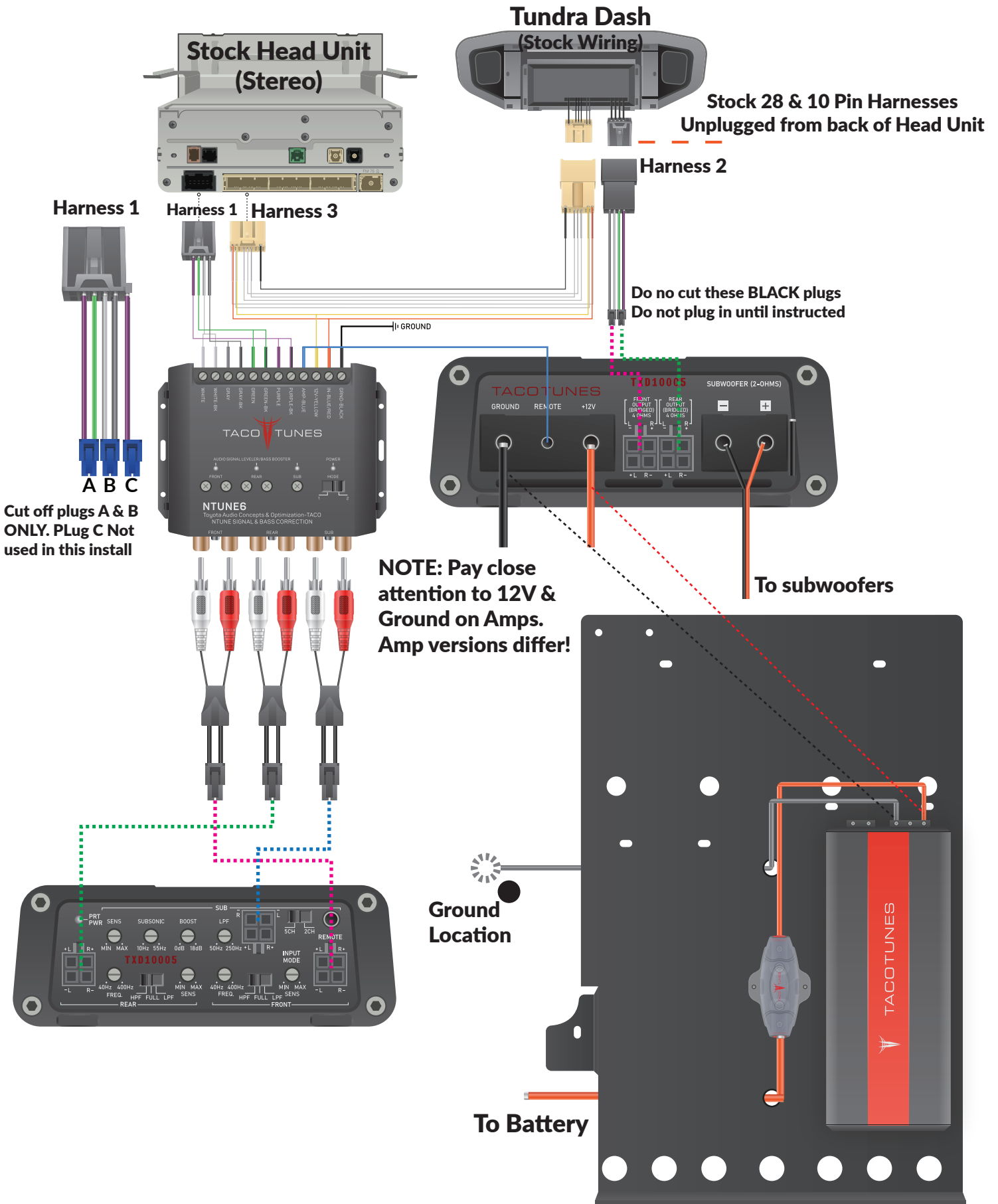
[Click Here:](#)

# Installation: Amps / Stock Stereo Integration (Part 1)

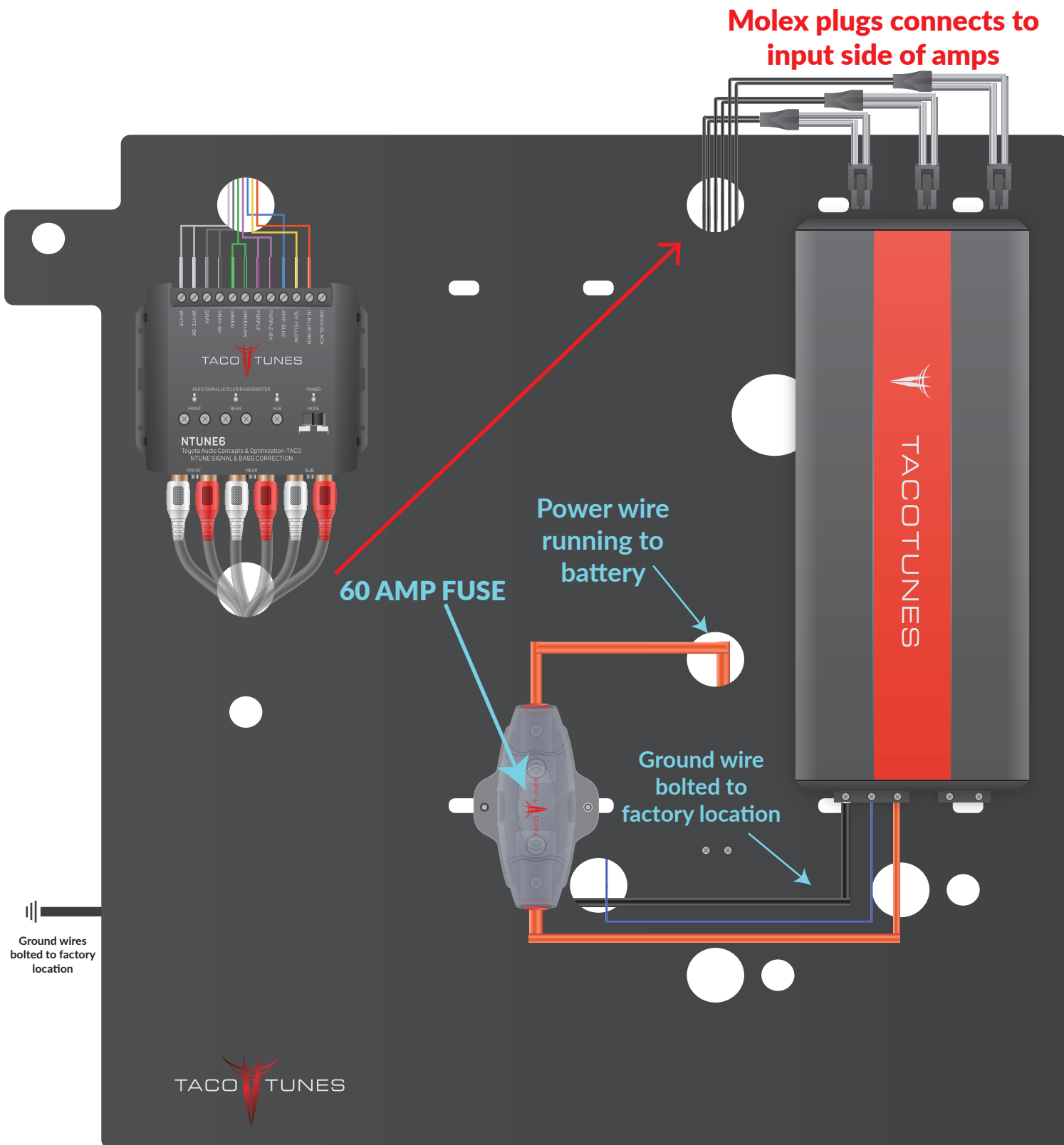
**BLUE TEXT IS LINKED TO VIDEO / PAGE – SIMPLY TOUCH/CLICK THE BLUE TEXT**

1. [Disconnect negative terminal from battery and SECURE away from battery. IMPORTANT: DO NOT CONNECT BATTERY UNLESS INSTRUCTED. DO NOT OPERATE YOUR TUNDRA WITH SEATS OR AIRBAGS DISCONNECTED.](#)
2. [Remove driver side seat bolts. Lean seat back and ensure not to stress any of the wire harnesses. \(No Power Seats\)](#)
3. [Remove kick panel, front & rear door sills.](#)
4. [Install/run amp power cable from battery to driver side seat location.](#) (NON POWER SEATS)
5. [Install/run amp power cable from battery to rear wall.](#) (Power Seats)
6. [Install and assemble fuse holder \(battery location\). Do not connect to battery at this time.](#)
7. [Gain access to back of stock stereo. Do not remove stock stereo completely.](#)
8. [Install Plug and Play \(PNP\) harnesses into stock Head Unit \(stereo\).](#) Complete head unit removal is not necessary.
9. [Route \(install\) the PNP Harnesses \(1, 2 & 3\) from behind stock stereo to amp mounting location under driver seat.](#)
10. [Route \(install\) the PNP Harnesses \(1,2 & 3\) from behind stock stereo to amps mounted on rear wall.](#)
11. [Install amps / Ntune6 – \(Under Seat\)](#)
12. [Install amps / Ntune6 – \( Rear Wall\)](#)
13. [Tune your 5 channel amp to your truck.](#)
14. [How to install your bass knob.](#)

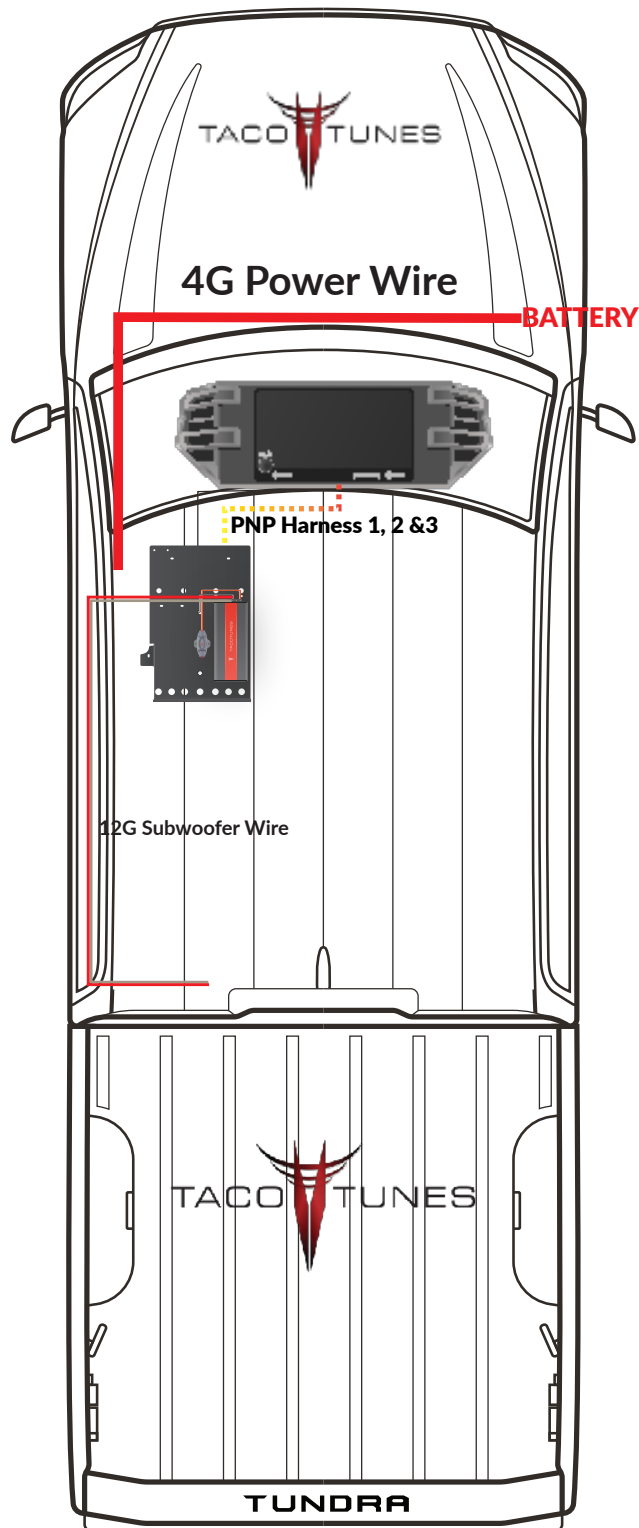
# Section 1a- Amps & Stereo Integration



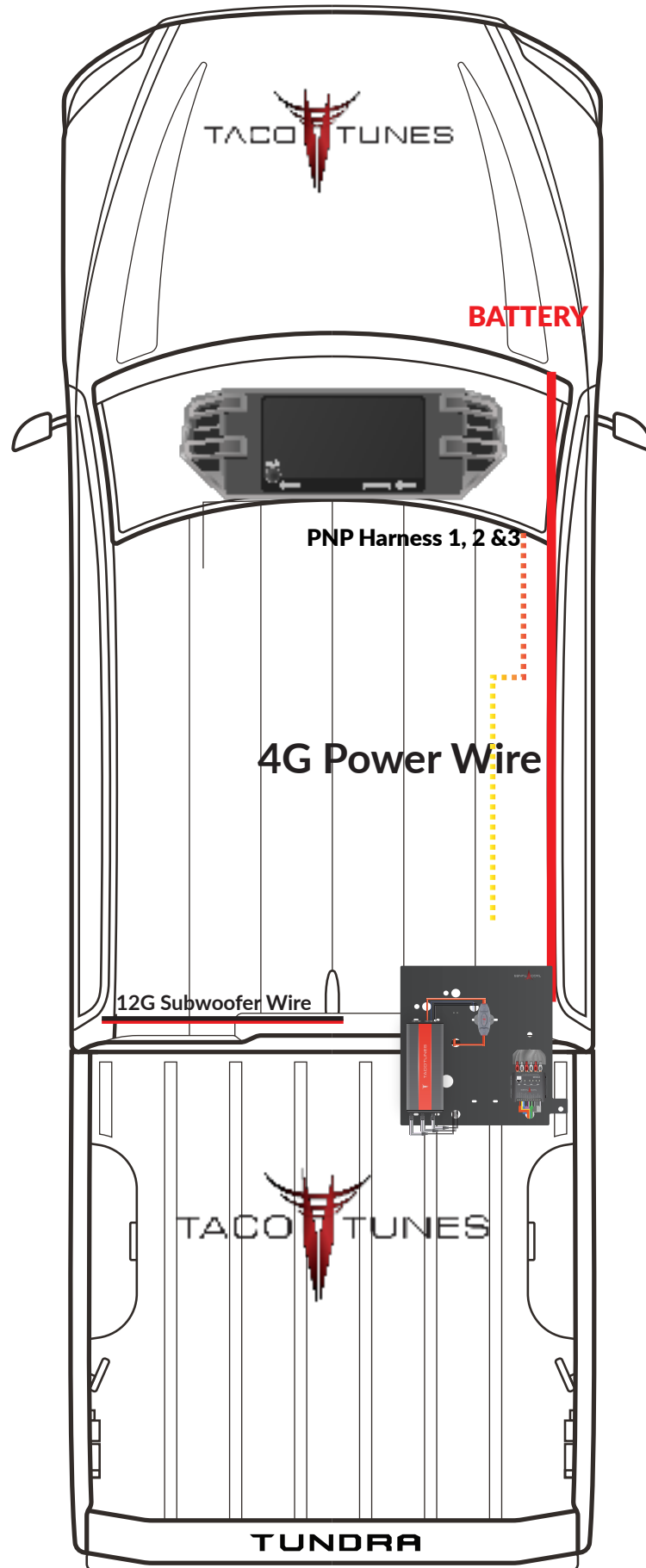
# Rear wall amp rack - 2022 Tundras equipped with power seats



# Under Driver Seat - Amp Rack Installation Overview



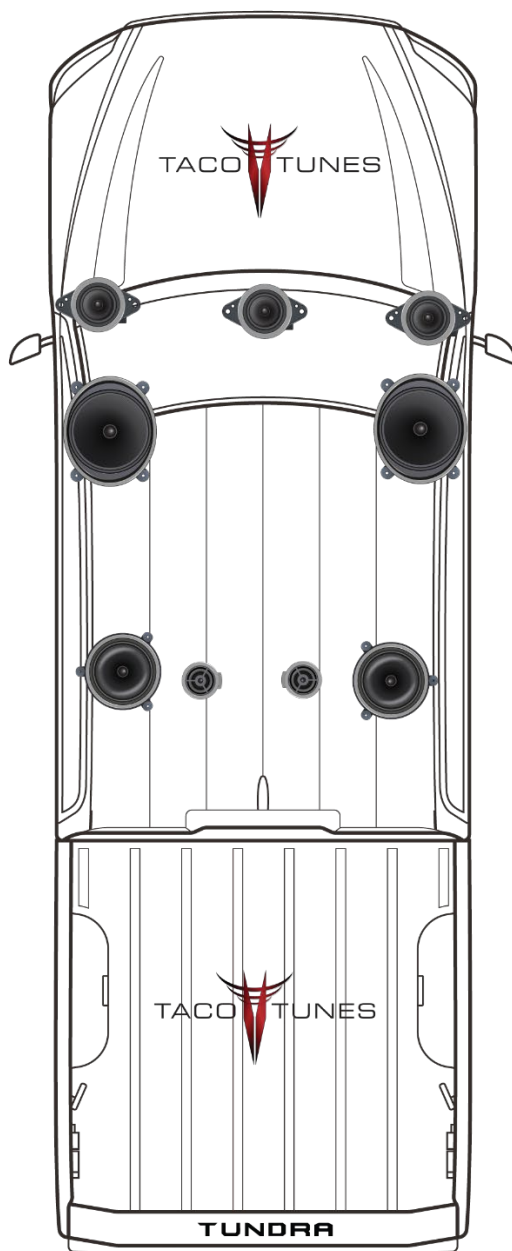
# Rear Wall - Amp Rack & Amp Installation Diagram - Power Seats



# Installation: Front & Rear Door Speaker Installation (Part 2)

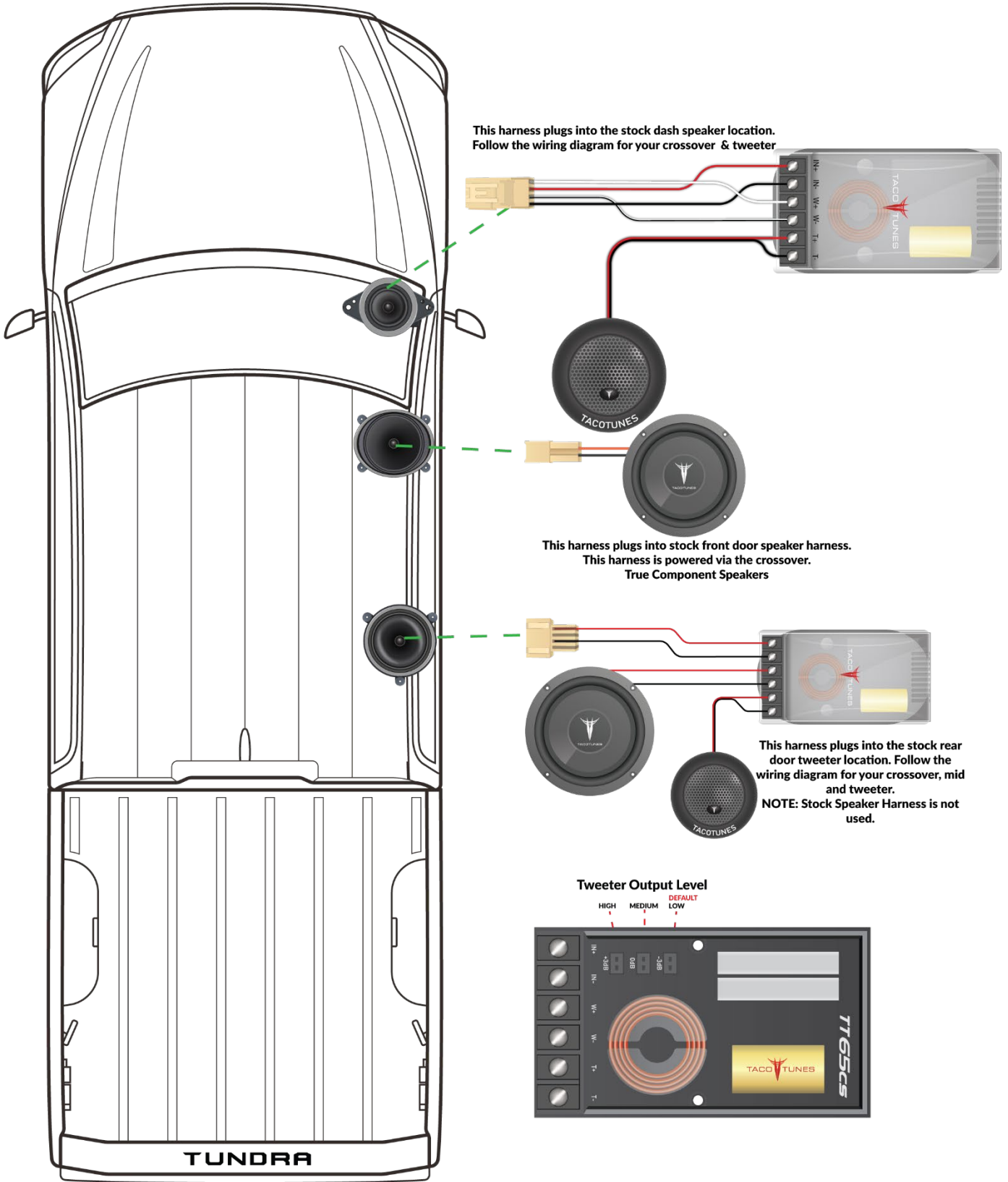
1. [Remove front door panels and speakers.](#)
2. [Remove rear door panels and speakers.](#)
3. [Remove all three dash speakers.](#)
4. [Install dash tweeters & crossover network.](#)
5. [Install front door mid bass drivers / speakers.](#)
6. [Install rear door crossover mounts & crossover network.](#)
7. [Install rear door mid bass drivers / speakers.](#)
8. [Install rear door tweeters in door panel.](#)
9. Leave door panels off until stereo installation is complete.

## Part 2a - Remove stock speakers



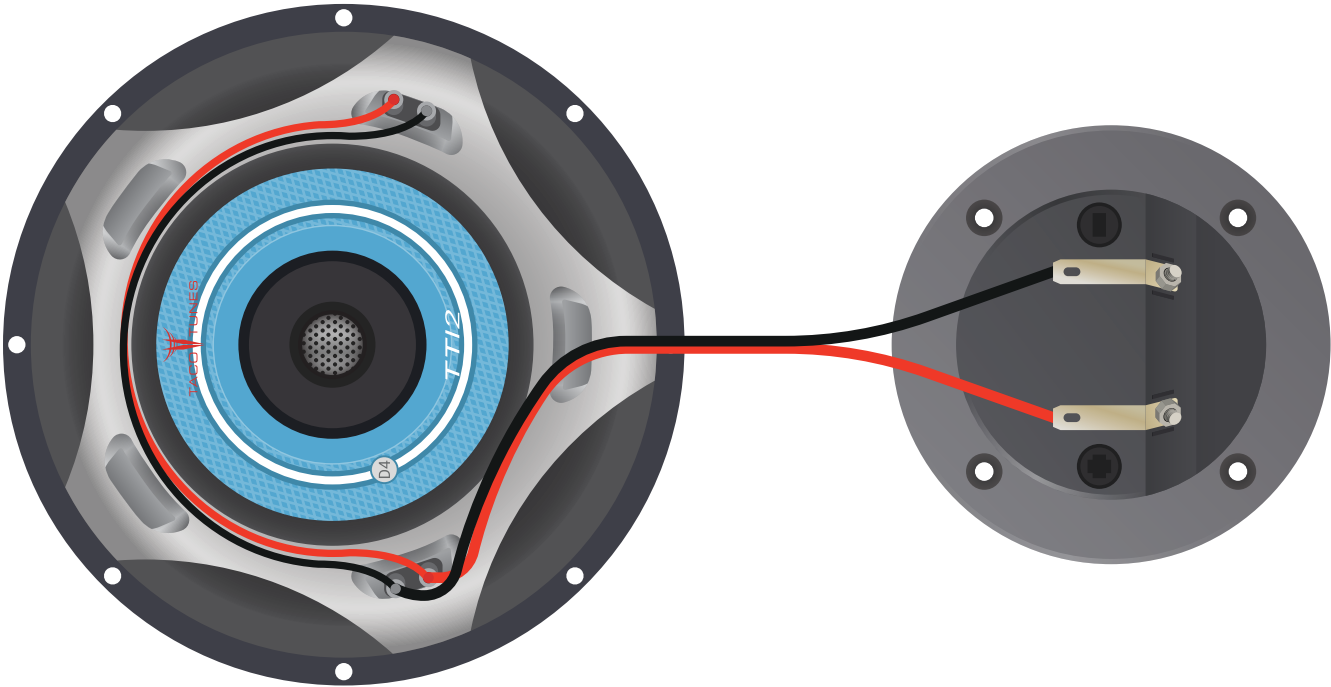


# Part 2b - Component Speaker Installation



# System 1A

## Subwoofer Wiring Diagram



# Installation: Subwoofer Box Installation

1. Remove stock storage location behind the seat.
2. Trim plastic piece behind seats to allow subwoofer box to fit. (will not be seen or affect vehicle)
- 3.

# Tools Required:

Panel removal tools

T50 torx

Socket Extension

10 mm socket

10mm Wrench

14mm Wrench

12mm Socket

14mm Socket

Sharpie

Drill

7/64 Drill bit

Screw driver socket with 9/32 or 7mm

Impact with Phillips bit

Phillips screw driver (various sizes)

Pocket knife/ Box Cutter

Terminal Crimpers

Wire Cutters

Needle Nose pliers

Allen Wrench (various sizes)

Wire strippers

Flathead Screwdriver

Sand Paper

Digital multimeter with alligator clips

Small Flathead screwdriver

Mobile phone capable of downloading testones

Extra zip ties as needed

Electrical Tape

Masking tape

Long ziptie/coathanger/similar object

Scissors

Hammer

Flashlight