

# **REMOTE TURN ON CONNECTIONS -**

## **From headunit to amplifier(s)**

# **FAQ**

**If you are using tacotunes remote turn on harness connect your harness according to the following diagrams**

**If your amplifier(s) support OR you are using high level/speaker level input, you will NOT need a remote turn on harness**

**If you are using a line out converter, OR RCA Cables you WILL need a remote turn on harness**

**If you are unsure if you need this harness, or have further questions, please consult with our team. Please provide your amplifier(s) and/or LOC model number(s) via online chat, text - 210-472-0000, or email at [sales@tacotunes.com](mailto:sales@tacotunes.com).**

# EXAMPLE TXD A -

## Connect harness directly to Line Out Converter to TacoTunes amplifier(s)

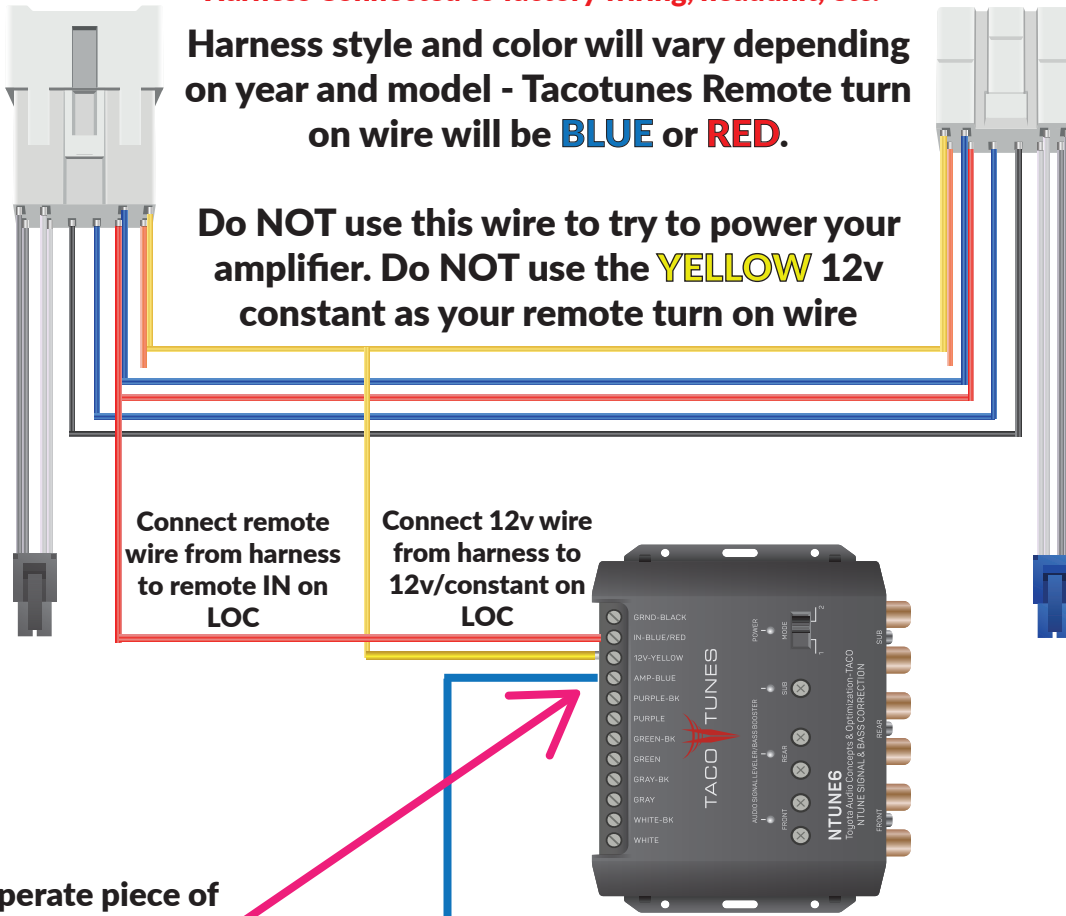
**Harness Connected to factory wiring, headunit, etc.**

Harness style and color will vary depending on year and model - Tacotunes Remote turn on wire will be **BLUE** or **RED**.

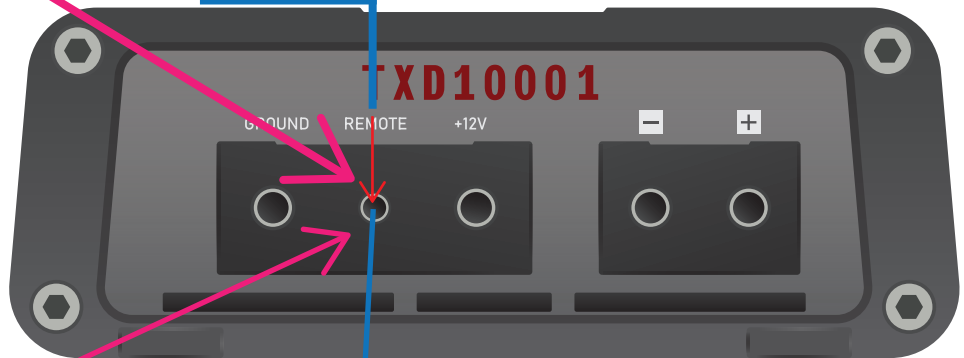
**Do NOT** use this wire to try to power your amplifier. **Do NOT** use the **YELLOW** 12v constant as your remote turn on wire

Connect remote wire from harness to remote IN on LOC

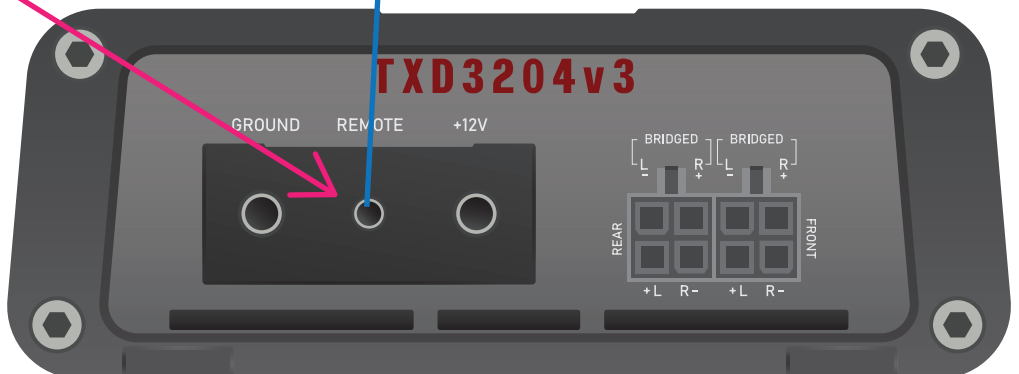
Connect 12v wire from harness to 12v/constant on LOC



Connect a separate piece of wire to **BOTH** Line out converter and remote connection on your amplifier



Connect a separate piece of wire to **BOTH** remote connections on your amplifier

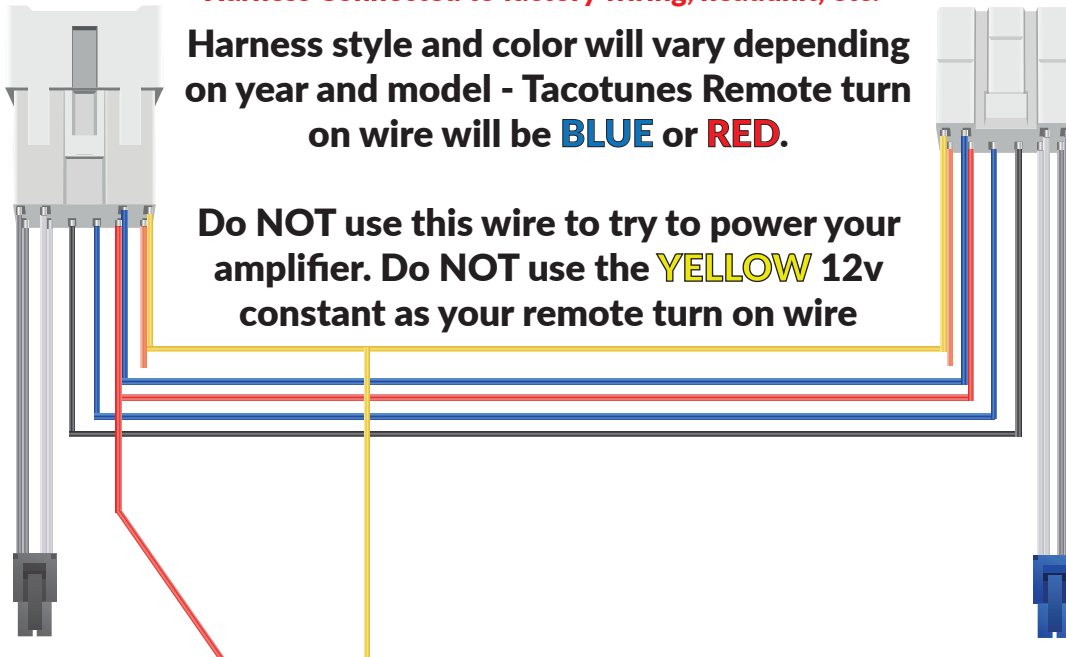


# EXAMPLE TXD A - Connect harness directly to TacoTunes amplifier(s)

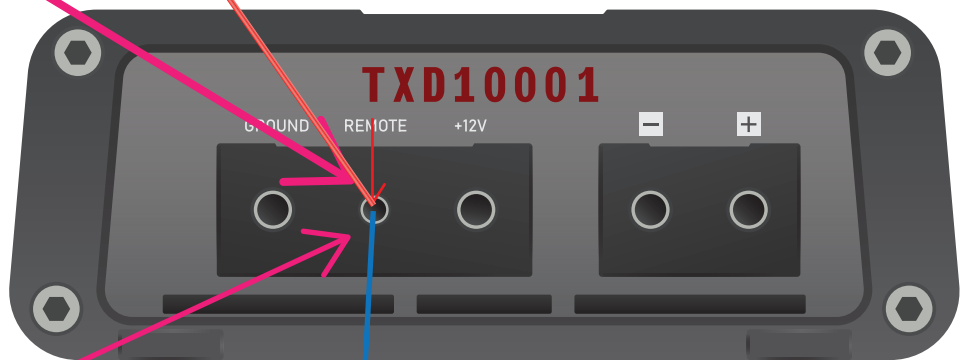
Harness Connected to factory wiring, headunit, etc.

Harness style and color will vary depending on year and model - TacoTunes Remote turn on wire will be **BLUE** or **RED**.

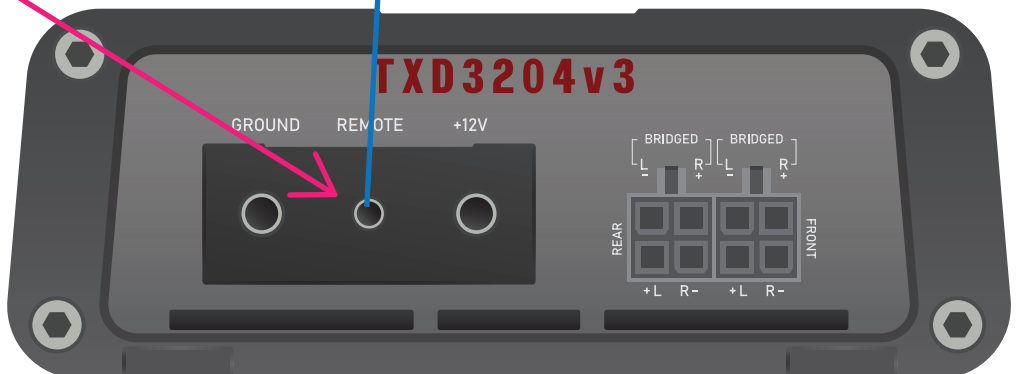
Do NOT use this wire to try to power your amplifier. Do NOT use the **YELLOW** 12v constant as your remote turn on wire



Connect remote turn on wire to remote connection on your amplifier



Connect a separate piece of wire to BOTH remote connections on your amplifiers

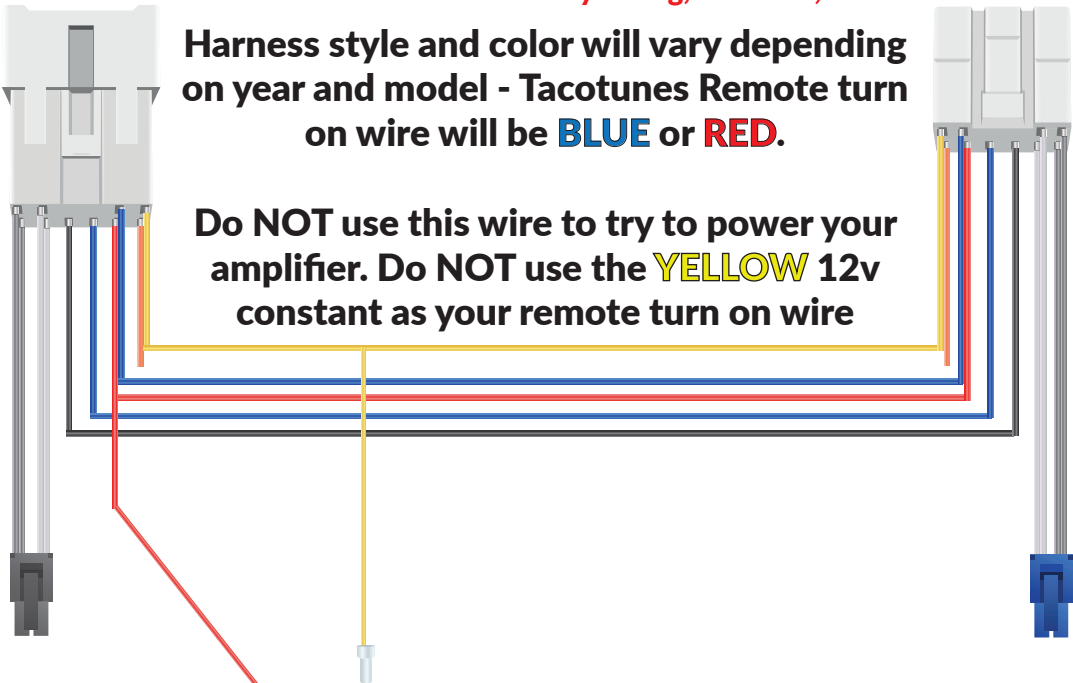


# EXAMPLE A- Connect harness directly to amplifier(s)

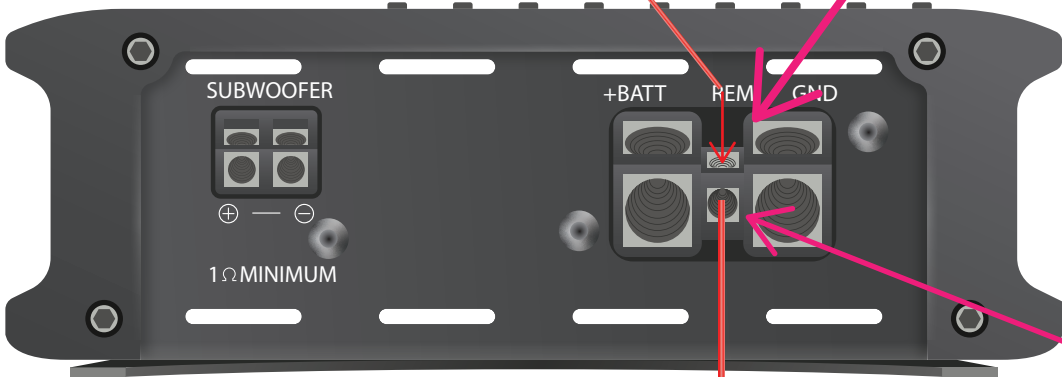
Harness Connected to factory wiring, headunit, etc.

Harness style and color will vary depending on year and model - Tacotunes Remote turn on wire will be **BLUE** or **RED**.

Do NOT use this wire to try to power your amplifier. Do NOT use the **YELLOW** 12v constant as your remote turn on wire



Connect remote turn on wire to amplifier REMOTE connection



Connect a separate piece of wire to BOTH remote connections on your amplifier



# EXAMPLE B-

## Connect harness directly to Line Out Converter & amplifier(s)

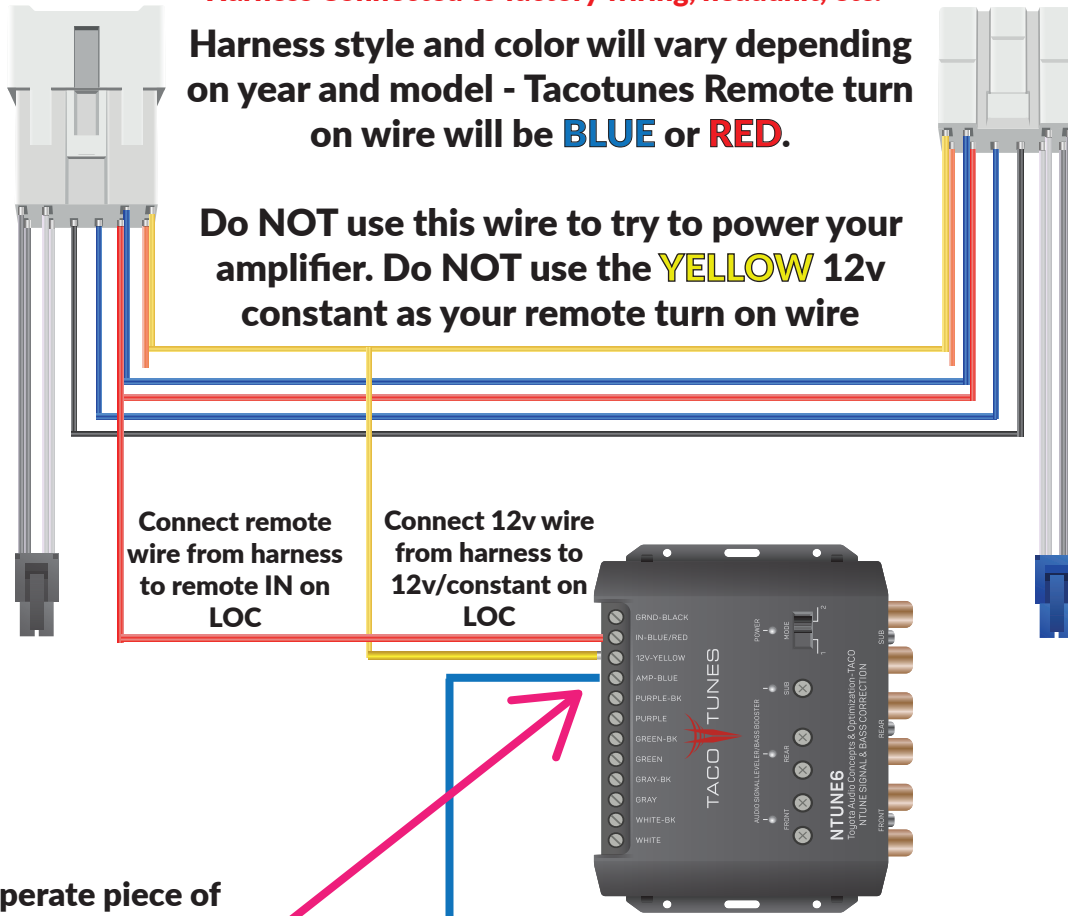
**Harness Connected to factory wiring, headunit, etc.**

Harness style and color will vary depending on year and model - Tacotunes Remote turn on wire will be **BLUE** or **RED**.

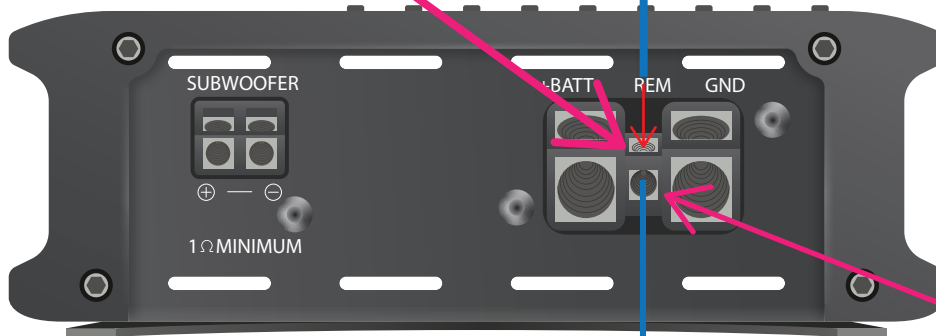
**Do NOT** use this wire to try to power your amplifier. **Do NOT** use the **YELLOW** 12v constant as your remote turn on wire

Connect remote wire from harness to remote IN on LOC

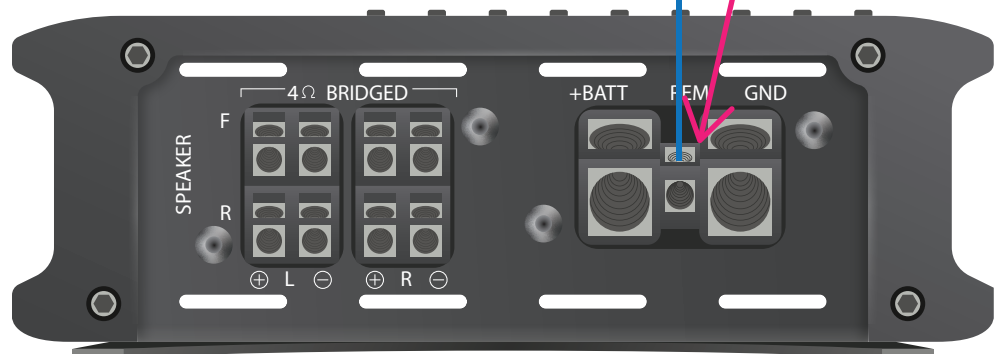
Connect 12v wire from harness to 12v/constant on LOC



Connect a separate piece of wire to **BOTH** Line out converter and remote connection on your amplifier



Connect a separate piece of wire to **BOTH** remote connections on your amplifier

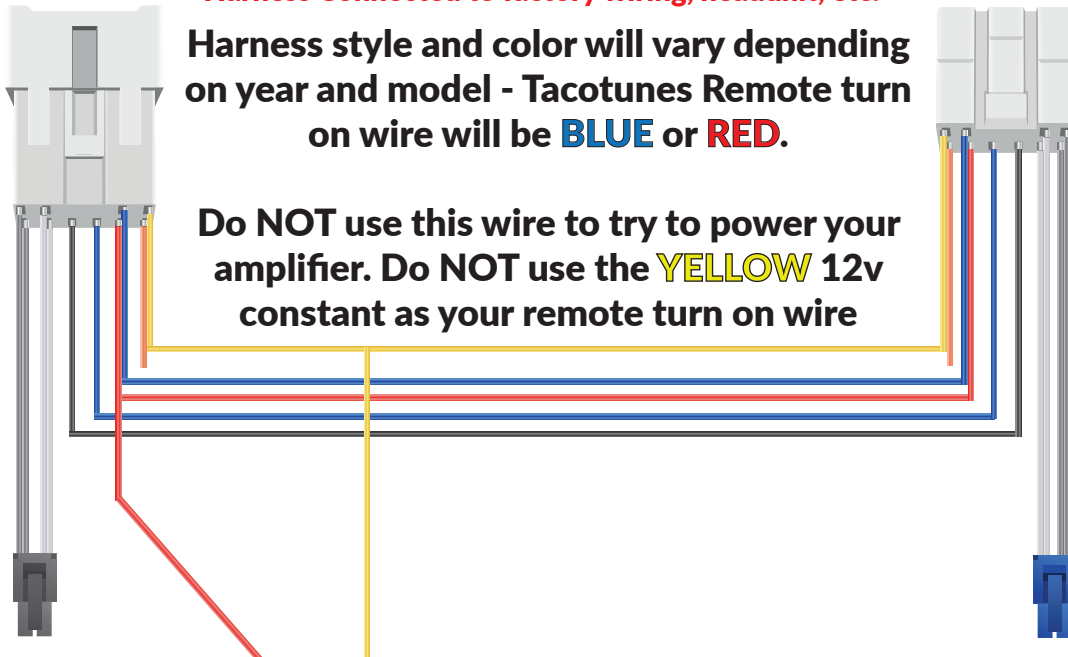


# EXAMPLE C - Connect harness directly to powered subwoofer

**Harness Connected to factory wiring, headunit, etc.**

Harness style and color will vary depending on year and model - Tacotunes Remote turn on wire will be **BLUE** or **RED**.

Do NOT use this wire to try to power your amplifier. Do NOT use the **YELLOW** 12v constant as your remote turn on wire



Connect remote turn on wire to remote connection on your powered subwoofer

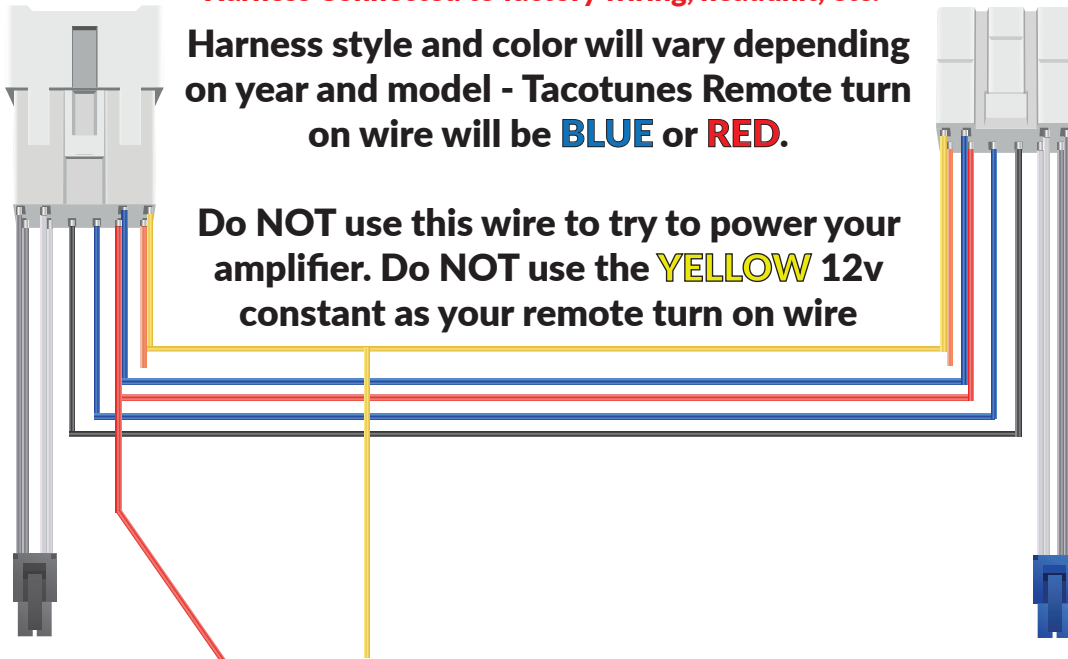


# EXAMPLE E - Connect harness directly to TacoTunes amplifier

**Harness Connected to factory wiring, headunit, etc.**

Harness style and color will vary depending on year and model - TacoTunes Remote turn on wire will be **BLUE** or **RED**.

Do NOT use this wire to try to power your amplifier. Do NOT use the **YELLOW** 12v constant as your remote turn on wire



Connect remote turn on wire to remote connection on your 5 channel amplifier

