

# Tacotunes.com 2007-2021 Tundra Powered Subwoofer

## Tuning Instructions



Before attempting to play your powered subwoofer please adhere to the following instructions. Failure to do so can result in damaged equipment and potentially void the warranty of this product.

**Please follow the instructions below carefully.**

**Do NOT turn on your vehicle until the instructions explicitly state to do so.**

**Ignoring this warning could cause permanent damage to your subwoofer and/or the built-in amplifier and WILL void the warranty.**

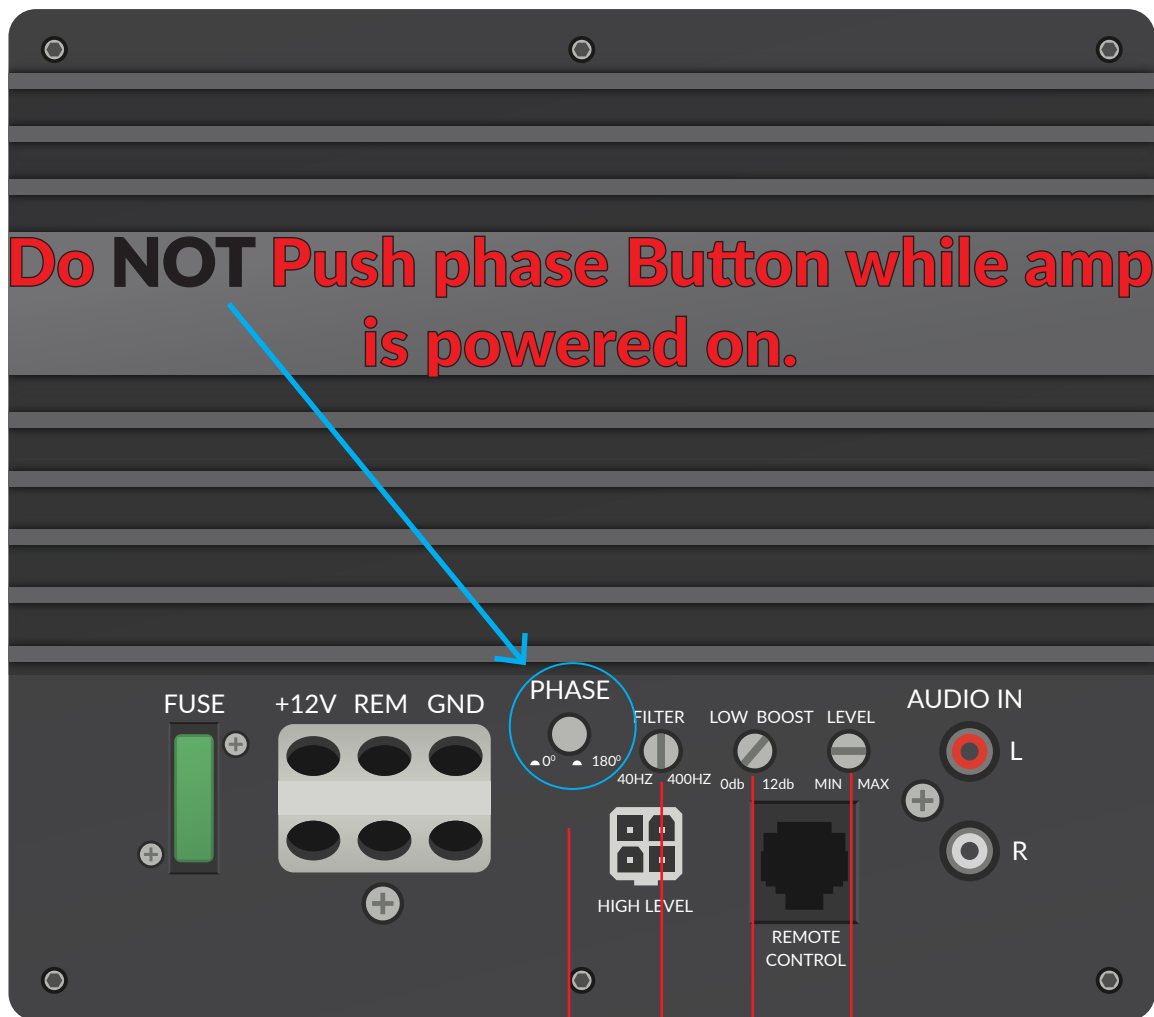
**Before proceeding with the following steps please ensure that ALL knobs are turned all the way down/ all the way to the left.**

## 2007-2021 Toyota Tundra Tuning Instructions:

Adjust the amplifier's buttons and knobs according to the diagram below. Once all connections and adjustments are made please install the enclosure behind your rear seat prior to turning on your vehicle.

*NOTE: Do NOT press PHASE button while amplifier is powered on or while subwoofer is playing.*

All of these steps must be completed **BEFORE** turning on your vehicle and providing power to the amplifier.

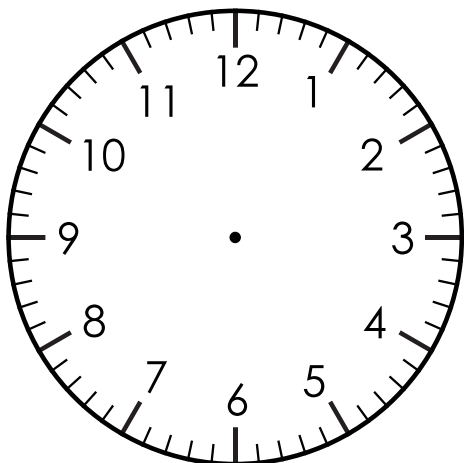


Push button IN

Set 12 O'Clock

Set to 7 O' Clock

Turn to 0dB



## Subwoofer/Bass Control Knob

Please make sure the subwoofer control knob is turned all the way up and to the right.



**At this point of the installation the following steps should be completed:**



- **Subwoofer/Bass Control knob turned all the way up and to the right**
- **Amplifier Knob Adjustments**
- **Amplifier Phase button Adjustment**
- **All Amplifier/wiring harness connections**
- **Enclosure is installed behind the rear seat**

**You may now power on your vehicle and proceed with the following steps!**

# Head Unit Volume & Settings

*Note: You MUST have media/music playing in order to make the following adjustments within your head unit.*

**Do not turn the volume past 10 until you complete the following steps.**

**Failure to follow this warning can damage the amplifier and/or subwoofer and WILL void the warranty**

- 1. Set the “Bass” Sound/Media Tuning setting within your head unit “flat”/in the middle.**

**This setting MUST remain in this position for the duration of time that the powered subwoofer is installed in the vehicle.**

**Failure to follow this step will damage the amplifier and/or subwoofer and WILL void the warranty**

- 2. Turn OFF surround sound and/or auto levelizer (if applicable)**

**5.** Now you may turn your head unit up to a volume of 55. This is your new MAX volume. Exceeding this volume can/will damage the amplifier and/or subwoofer.

Failure to adhere to this warning **WILL** void the warranty.

## **Getting the Best Bass via Subwoofer Control Knob**

---

**Here's how to fine-tune your bass for awesome sound:**

The bass knob is your final adjustment tool. As you turn it up, listen carefully! If you start to hear a "fuzzy" or "crackling" sound, that's distortion, and it can significantly damage your subwoofer.

If you hear it, just turn the bass knob down until it sounds clear again.

### **IMPORTANT NOTE:**

*Should the subwoofer's voice coils incur damage (e.g., "burnt") resulting from non-adherence to the warnings and instructions contained within this document, the subwoofer's warranty will be voided.*

A festive graphic featuring a streamer on the left and confetti scattered across the top and right sides of the page.

# The tuning process is now complete!

**Turn up the music and enjoy  
the upgraded bass!**

**If you have any questions or concerns please feel free to  
reach out to our team here:**

**[Tacotunes Support Page](#)**

**or**

**text/call us at [210-472-0000](tel:210-472-0000) and we will get back with  
you as soon as possible.**